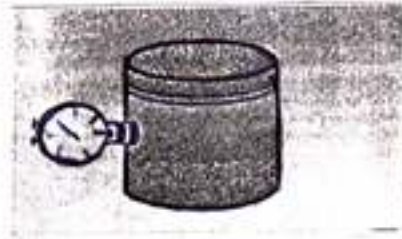




'NMC' MECHANICAL LOAD CELL - (DIAL GAUGE TYPE)



NMC Mechanical Load cell has been developed to measure the compressive load under steel or wooden props. A Dial gauge is used to measure deformation of Load Cell element under load.

SIZE AVAILABLE	:	5 Ton to 100 Ton
LEAST COUNT	:	1% of the Range
ACCURACY	:	1% of the full range
READ OUT	:	By Dial Gauge.

Load Cell with non-detachable dial gauge are also available.

Lit. No. 103/04/05



NANDA MILLAR COMPANY

Office : 32A, Chittaranjan Avenue, 2nd Floor, Kolkata-700 012, India. Tel : +91 33 2212 3530 / 3531 / 1783

Fax : +91 33 2212 2070. E-mail : nmc@nandagroup.com URL : www.nandagroup.com



An ISO 9001 : 2000
Registered Company

06/16/10