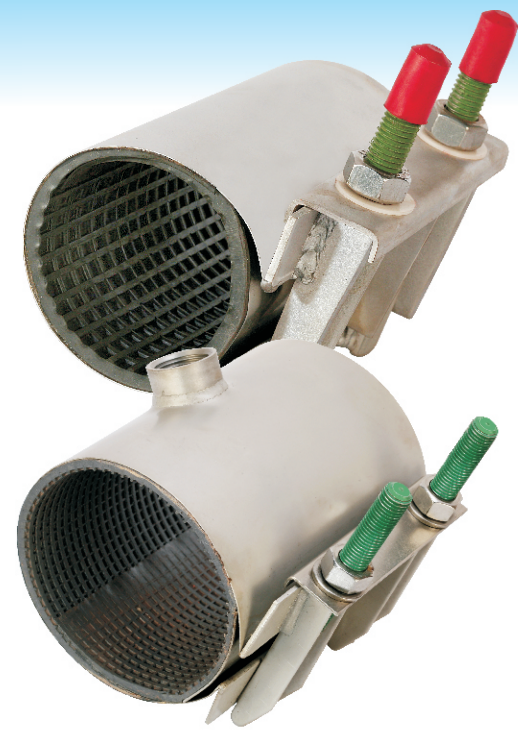




STAINLESS STEEL REPAIR CLAMP



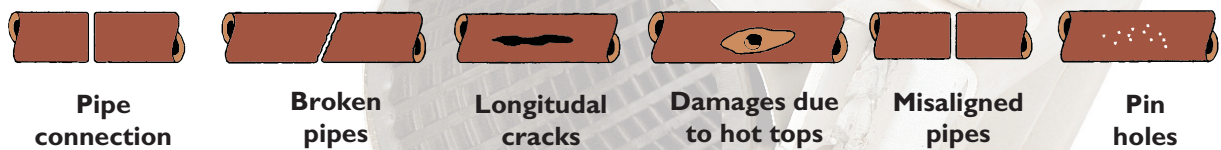
'NMC' repair clamps are flexible clamps consisting of one or more stainless steel, rubber lined, band sections. They are used for a **quick, easy and permanent** repair of corroded, damaged or broken pipes.

They can be applied to Ductile Iron, Grey Cast Iron, Steel, AC and PVC pipes. The clamp contains no loose parts that may get lost during installation.

FEATURES & BENEFITS :

- Material Parts : stainless steel AISI 304 or AISI 316.
- All parts have been deburred and are passivated to return the corrosion resistance after the welding process to its original state.
- Repair clamps are available in Single or Multi Band, (SS-1-Range 11 mm SS-2 Range 22 mm SS-3 Range 33 mm).
- The rubber is tapered and has a waffle pattern.
- The Band is TIG Welded to the sidebars, the lugs and Bolts are MIG Welded to the sidebars.
- Bridge plate is vulcanized into the rubber gasket.
- Keeper-Bar is provided with lip.
- Electro Zn Plated Nut or Teflon Coated Bolt are provided to prevent galling.
- FOP washers are provided to reduce friction between nut and keeper-Bar which also function as a torque indicator.
- No loose parts that may get lost during installation.
- No special tools required, a simple wrench will do the job.
- Special tape is used to fix the rubber gasket to the stainless steel band. The tape is flexible and reinforced with glassfiber thread to resist hot and humid climatological circumstances and guarantee a long storage capability.
- Under most circumstances the Clamps can be installed without releasing the pressure of the pipe.

FOLLOWING DAMAGES CAN BE REPAIRED :

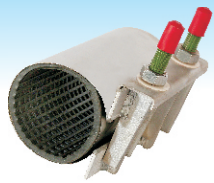


APPLICATION :

- Width of the clamp should be at least equal to the pipe OD
- Width of the clamp should be 150 mm greater than the length of a crack on pipes with outside diameters up to 350 mm. On larger pipes at least 200 mm.
- Maximum allowable distance between two pipe ends should not exceed 10 mm
- Maximum allowable deflection is 2°
- Maximum allowable offset should not exceed 3 mm



STAINLESS STEEL REPAIR CLAMP



RANGE

Type	No. Of Bands	From OD Range	Up to OD Range	Tolerance	Maximum Clamp Length
SS O	1	19 - 23 mm	60 - 64 mm	4 mm	300 mm
SS 1	1	48 - 55 mm	95 - 102 mm	7 mm	300 mm
SS 1	1	98 - 108 mm	and above	11 mm	300 mm
SS 2	2	88 - 108 mm	and above	22 mm	600 mm
SS 3	3	250 - 280 mm	and above	33 mm	600 mm

PRESSURE

The pressure on which the clamp can be used will vary with the type of clamp, pipe OD, medium etc. Use the following table as a guide (recommended working pressure, in bars, under ideal circumstances) :

Type	Pipe OD in mm	for Water	for Gas
SS O	All	6	1
SS 1	up to 89	20	6
SS 1	90-142	16	6
SS 1	143-271	10	6
SS 1	272-336	8	4
SS 2/3	up to 271	16	6
SS 2/3	272-364	16	4
SS 2/3	365-545	10	3
SS 2/3	546-632	6	1

Note : for higher pressure or other media please contact us

BOLTS

Bolts used are 1/2" or M14 rolled thread up to 175 mm OD size and M16 for larger size. The distance between the bolt centers up to 250 mm is 100 mm. For larger diameters this distance is 75 mm. On PVC pipe please use reduced torques.

Recommended Torques :	1/2	-	65 Nm
	14 mm	-	85 Nm
	16 mm or 5/8"	-	110 Nm

NUTS : Heavy hexagonal nuts.

RUBBER GASKET

The 'NMC' Clamp can be supplied with following types of rubber :

Rubber	: SBR-S (50° Shore A)	NBR-S (50° Shore A)	EPDM (60° Shore A)
Temperature	: -40° + 85° C	- 40° + 106° C	up to 140° C
Application	: (waste-) water, mild acids and alkali etc	gas, water, oil and other chemicals	hot water / steam and several other chemicals

STYLE SS-A1 (with outlet)

Style SS-A1 has the same basic design as the standard NMC repairing clamp SS-1, but with male/female thread outlet. It is also possible to provide an outlet on the standard clamps SS-2 (NMC style SS-A2) and SS-3 (style SS-A3)

Outlet OD

1/2" 3/4" 1"
1 1/4"
1 1/2"
2"

Clamp Size

available on all diameters
available from ø60mm OD
available from ø60mm OD width should be atleast 200 mm
available from ø70mm OD width should be atleast 200 mm



13/07/08