



## CLIVEY HOOK

Clivey Hook is a convenient means of connecting sinking bucket with winding rope. It is provided with a lock to prevent inadvertent detachment of sinking bucket.

### CLIVEY HOOK Type-A with Trapezoidal Section.

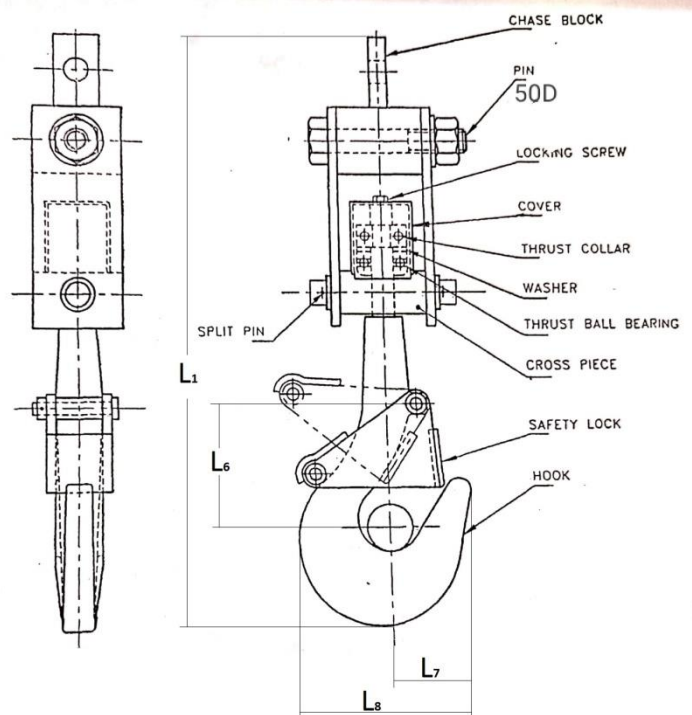
Its components are designed for SWL of 20,40,60,80,100 and 125kN.

Swivelling arrangement is totally enclosed.

Vital dimensions are as per the fig.

Link plates provide flexibility to system.

Swivelling is provided through Thrust Bearing.



Type A Clivey Hook Suspension Arrangement with Typical dimension for 80kN SWL

Safe Working Load kN	L1	L6	L7	L8	Dia D
80	755	183	148	348	100



**Clivey Hook Type-B** with rectangular section.

‘NMC’ Equipment for the suspension of Sinking Gear conforms ISI 7587 (Part 8): 1999.

- a) Winding Rope Capel may be white metal type or Friction Wedge type. Where the headroom is restricted, it is preferable to use white metal.
- b) Safety Detaching Hook is of 4 plate type and is optional.
- c) Suspension Link comprises link plate with pin and provides flexibility to the system.
- d) Swivelling arrangement is totally enclosed and supports a Swivelling eye.
- e) Clivey Hook is a convenient means of connecting sinking bucket with winding rope. It is provided with a lock to prevent inadvertent detachment of sinking bucket.

Material: 20C15 IS 5517:2004

- f) S.W.L. 50 or 80 kN
- g) Weight of Clivey Hook only 50 kg.
- h) Weight of Clivey Hook assembly without Rope Capel 200 kg approx.

